

Self-Service Business Intelligence in Railway

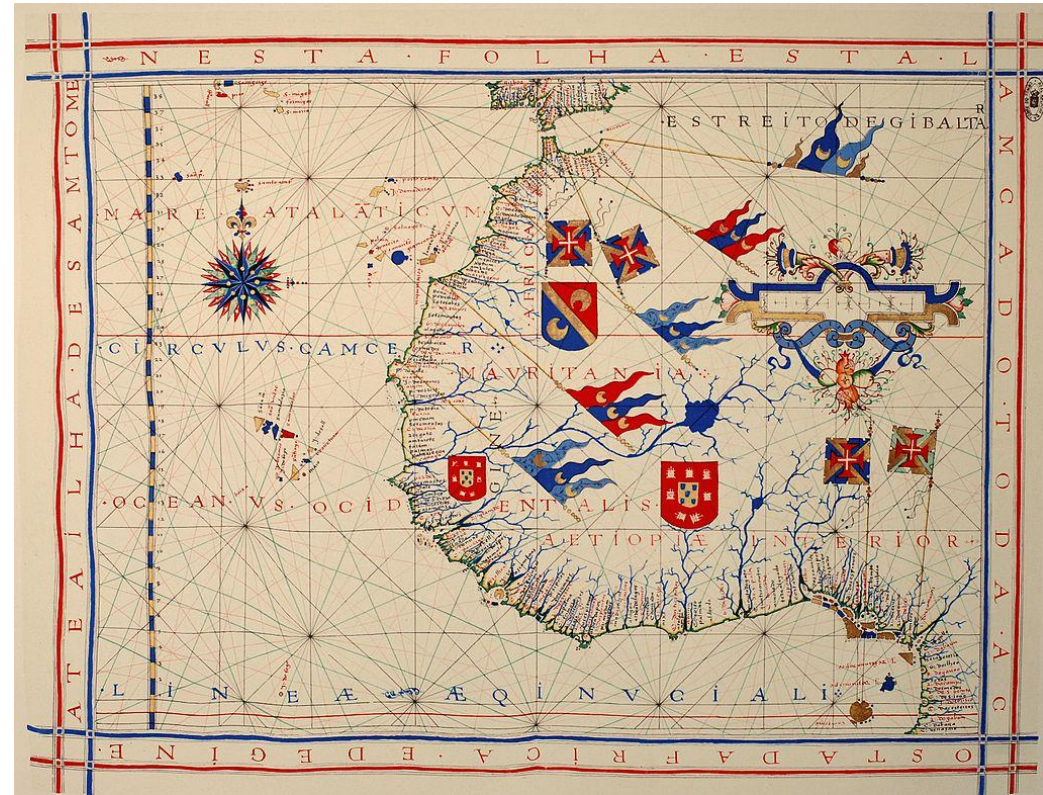
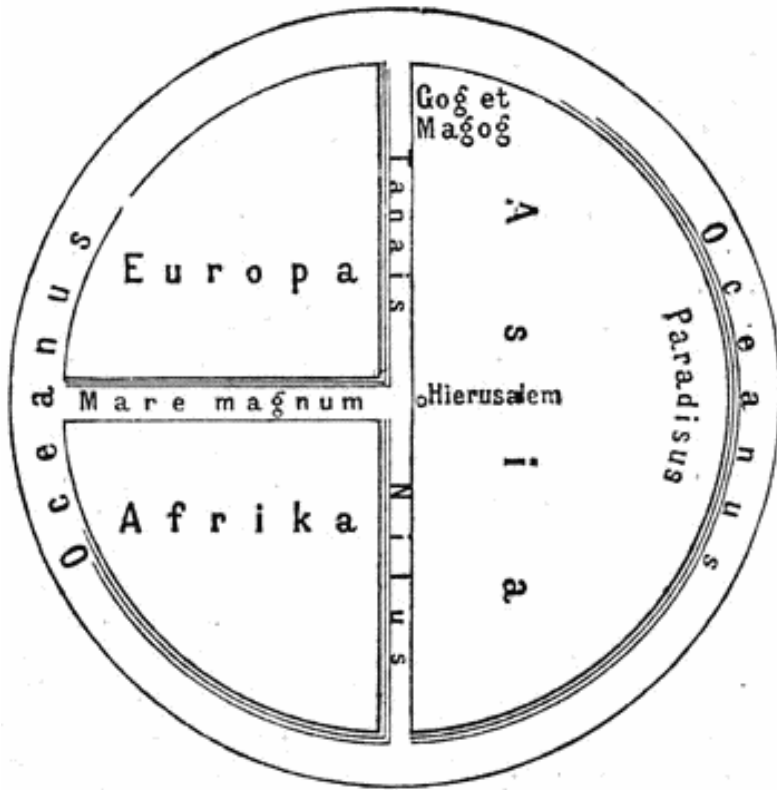


Zita Nagy-Palkovics
nagy-palkovicsz@vpe.hu



Tamás Soós
tamas.soos@eiger.net

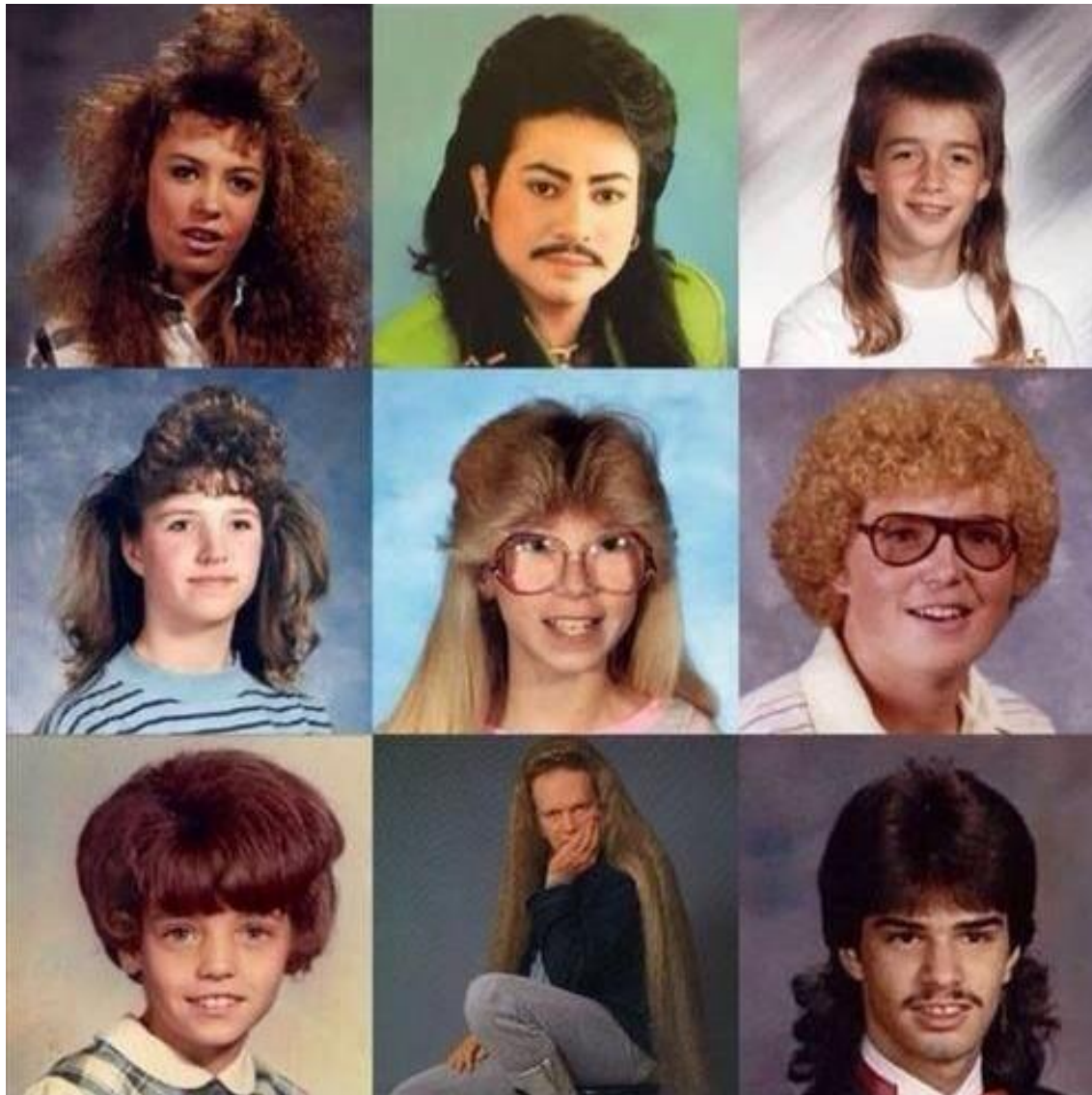
Data has revolutionized entire industries.



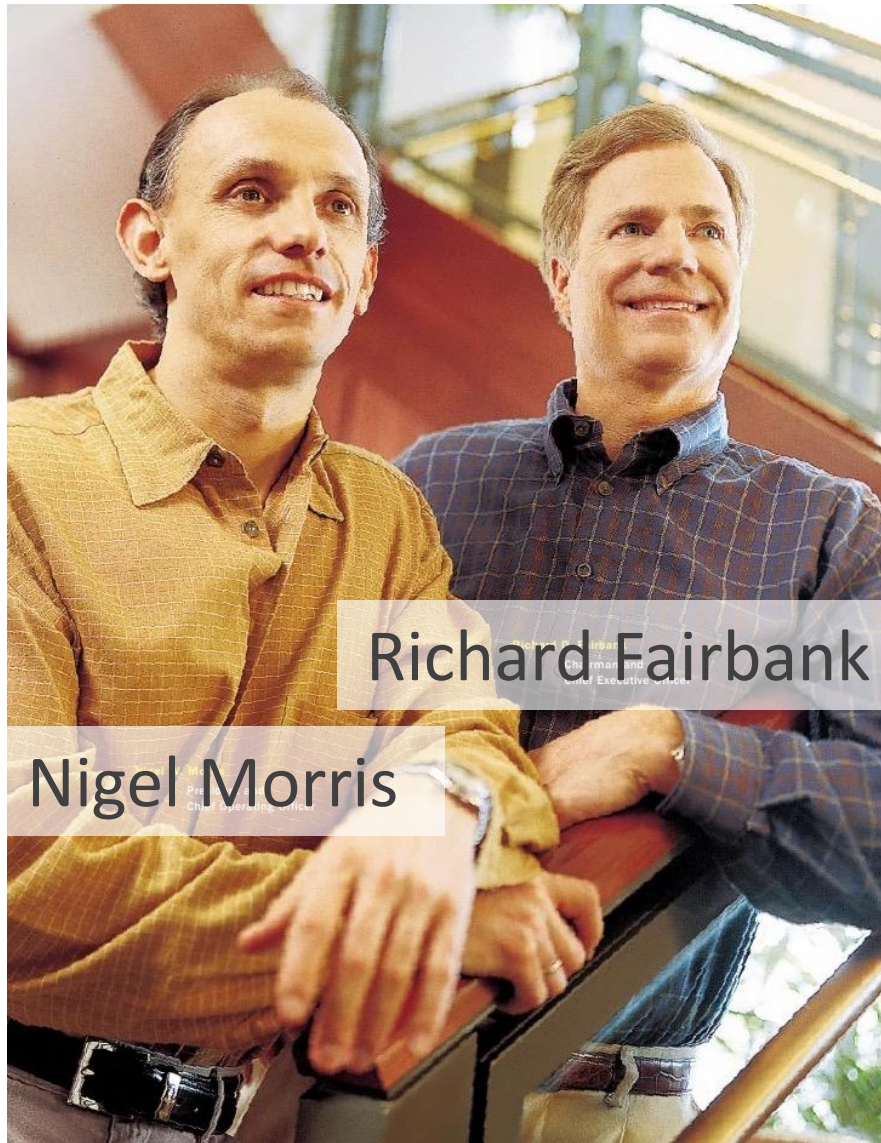
Some sectors have decades of experience.



Back to the 80s...



Data is investment and huge opportunity.

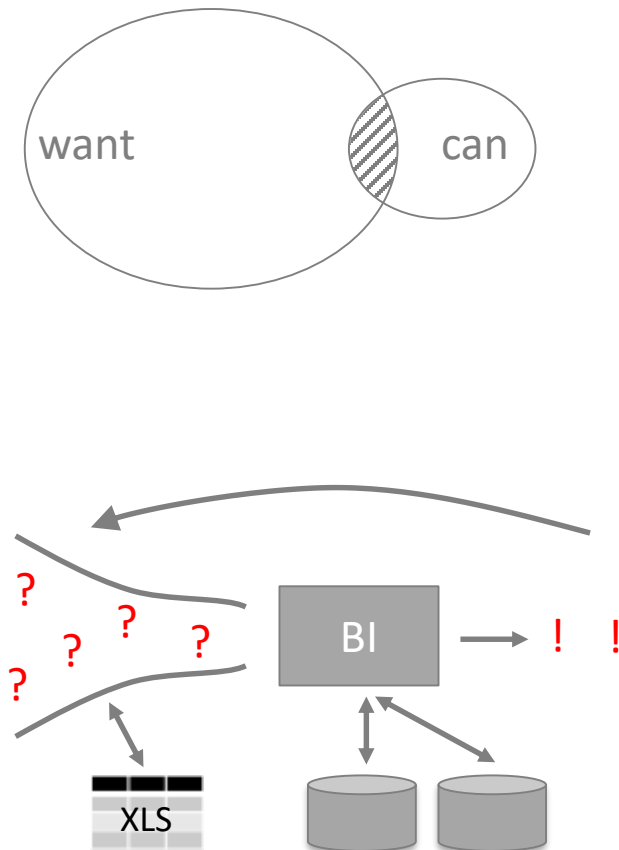


Who will be the RyanAir of railways?

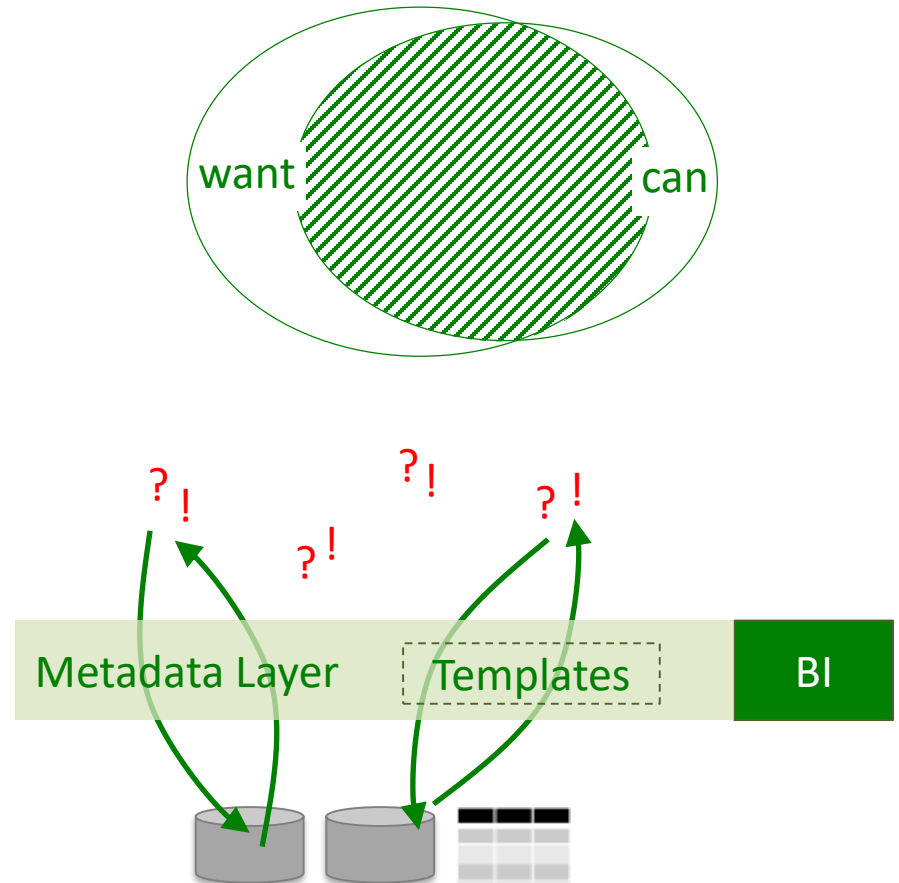


Next generation BI tools are emerging.

Traditional



Self-Service



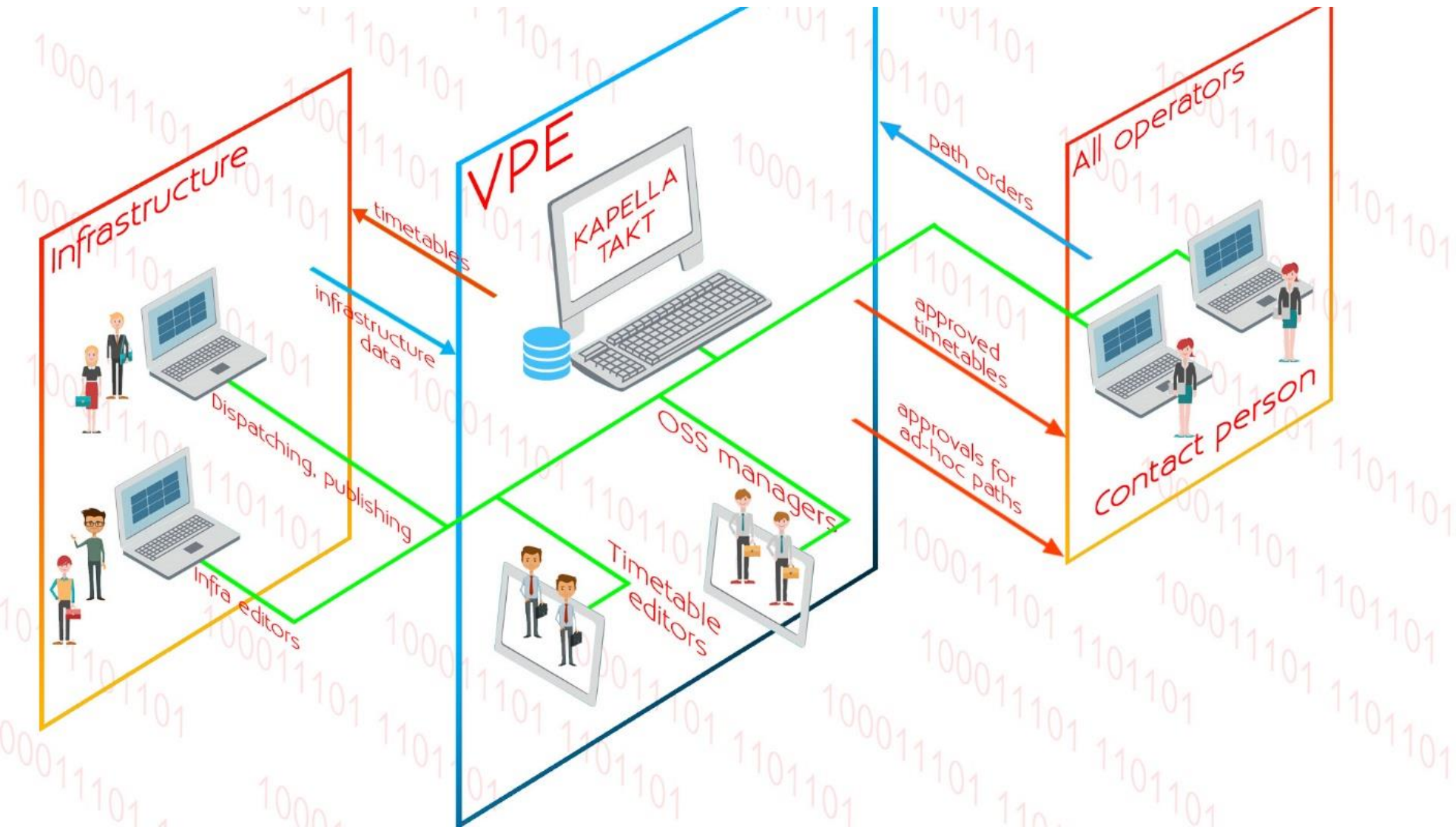
Data ≠ Information ≠ INSIGHT



Railway is second to none in amount of data.



VPE: The Rail Capacity Allocation Office



Many Original Problems

Key people

**Report need : Specification : Negotiation : Quotation :
Contracting : Development : Testing : Prod Report**

Resource intensive

Limits requests

Time-consuming

Limits the possibilities

Static outcome

Project Start in January

Idea of a self-service Business Intelligence



**Requirements
System Options**

Reports at VPE

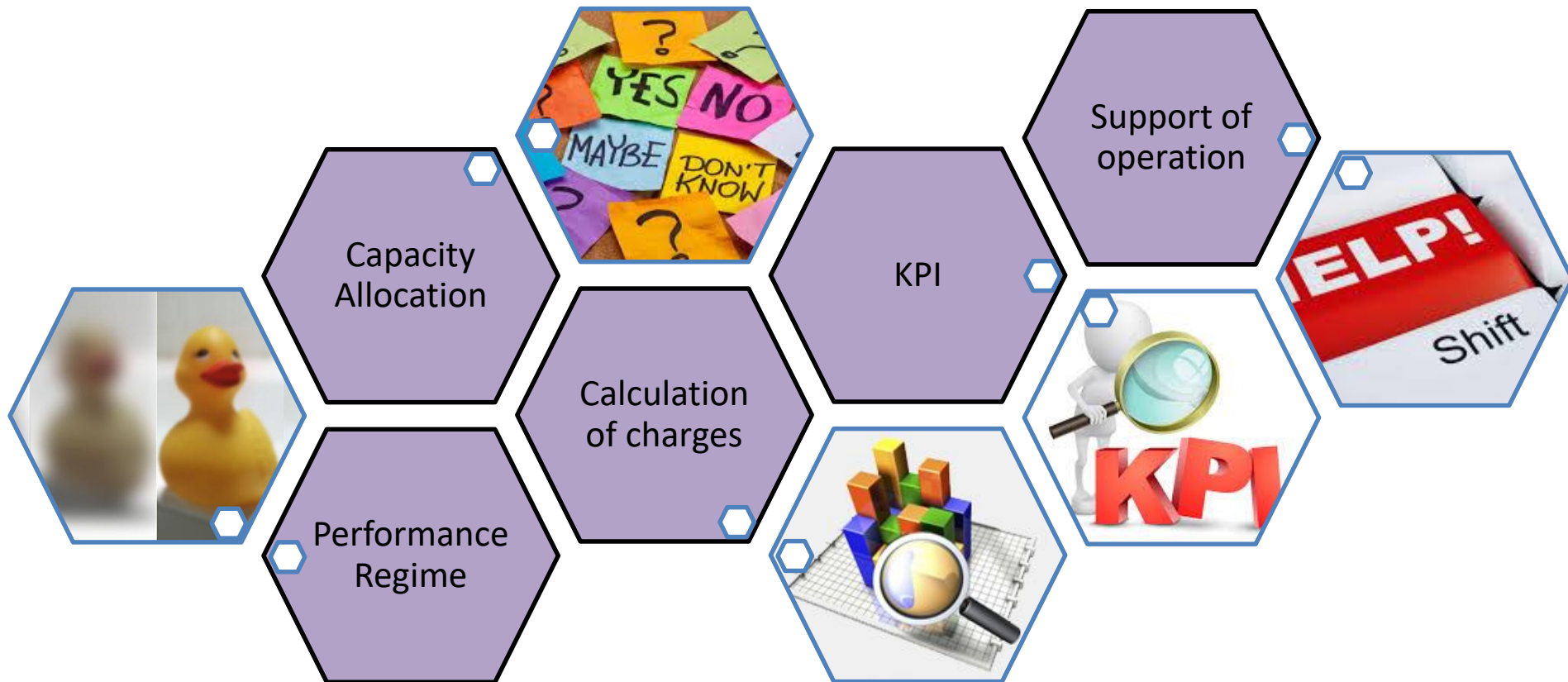
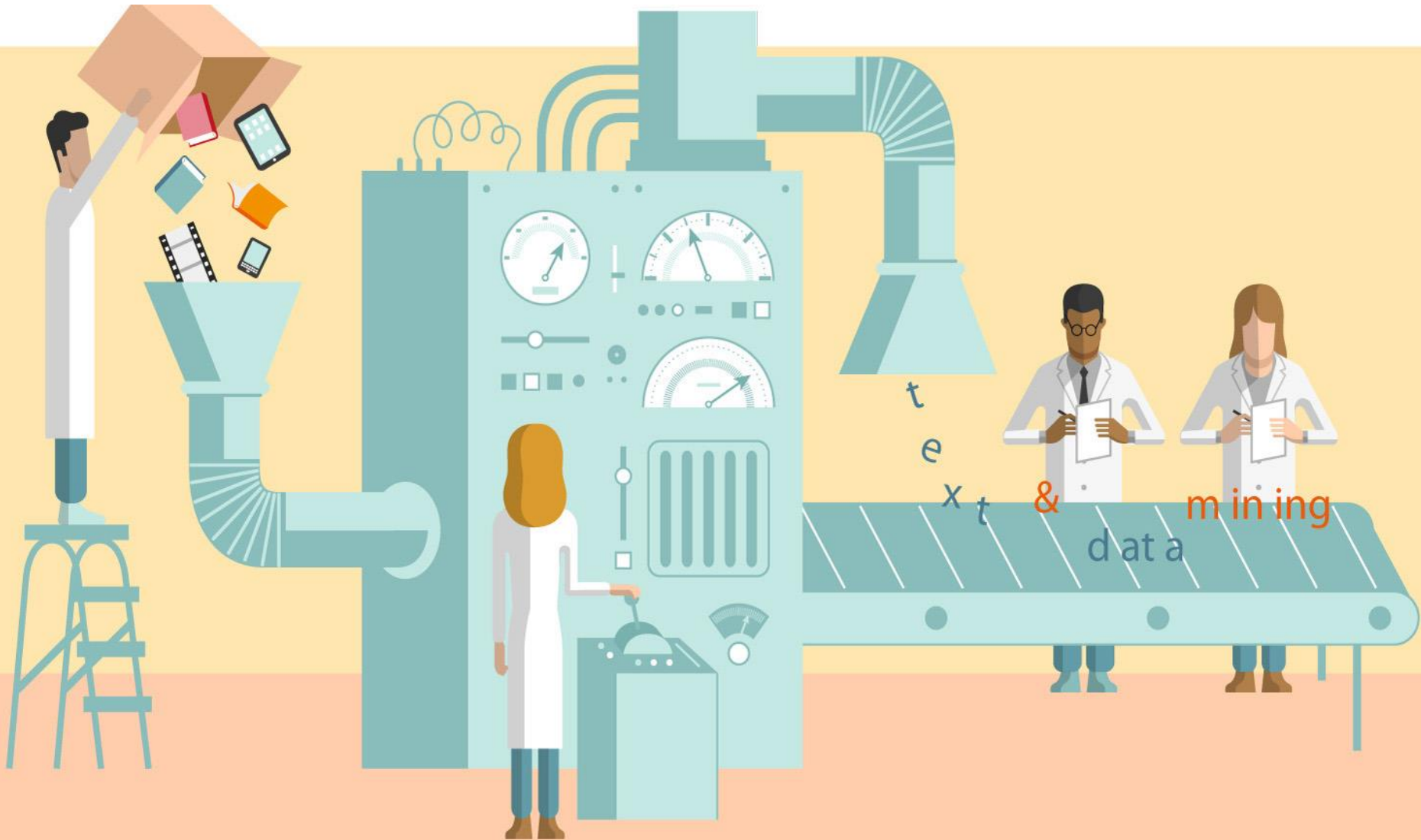


Tableau: Faster results, anyone can use it

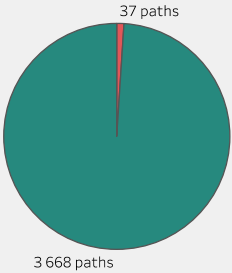


Corridor Trains

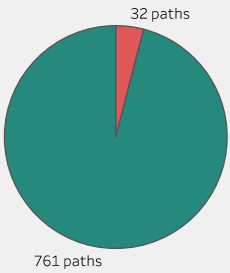
Corridor Trains



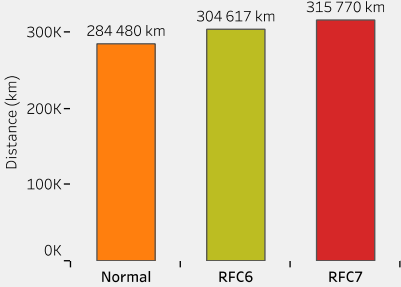
Total number of corridor trains



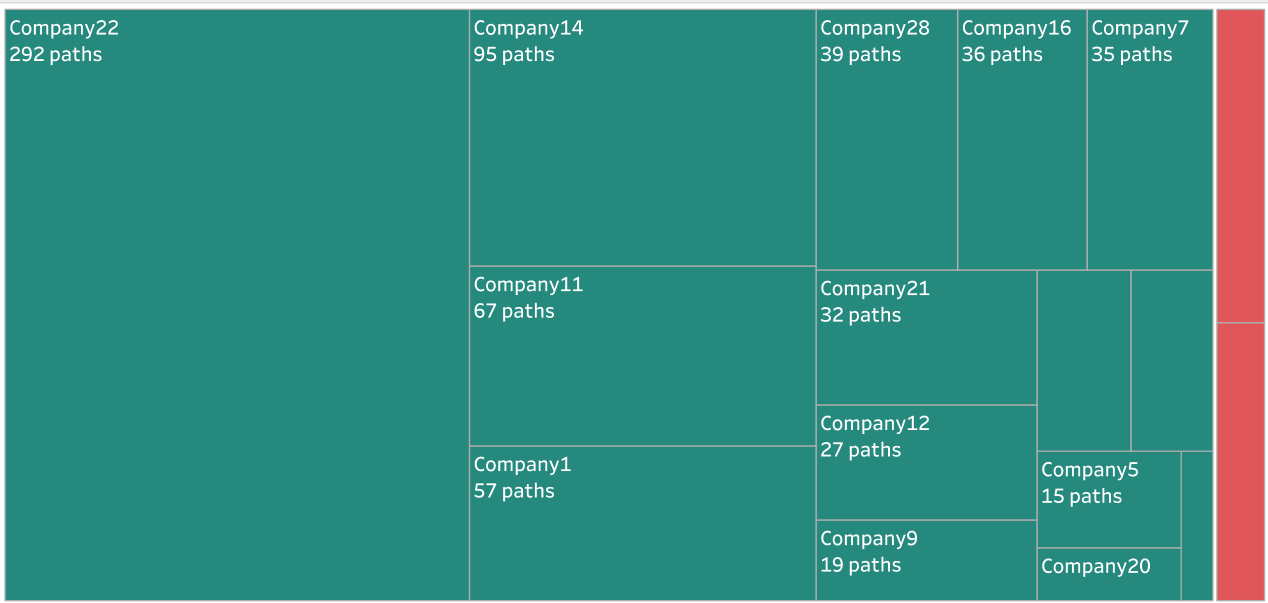
Corridor trains



Travelled distance



Order by companies



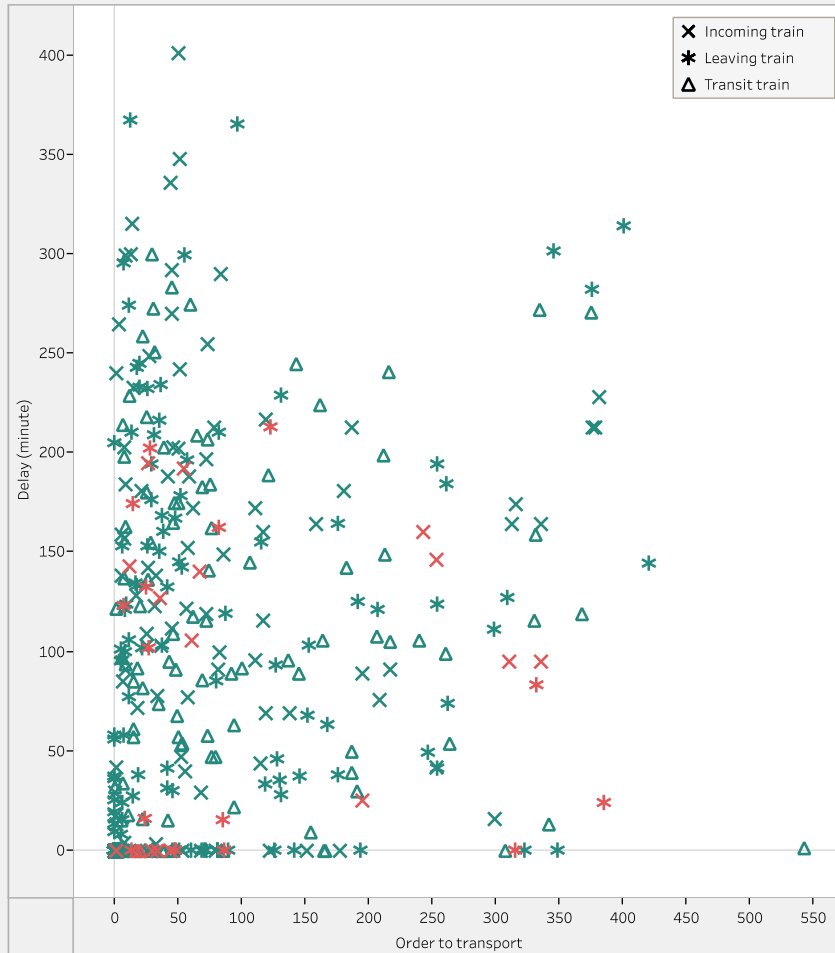
		Date
		01/01/15 to 31/05/16
Corridor	Normal	
Company22	15 paths	292 paths
Company14		95 paths
Company11		67 paths
Company1		57 paths
Company7	17 paths	35 paths
Company28		39 paths
Company16		36 paths
Company21		32 paths
Company12		27 paths
Company9		19 paths
Company13		18 paths
Company6		16 paths
Company5		15 paths
Company20		8 paths
Company8		5 paths

Corridor Delays and Distances

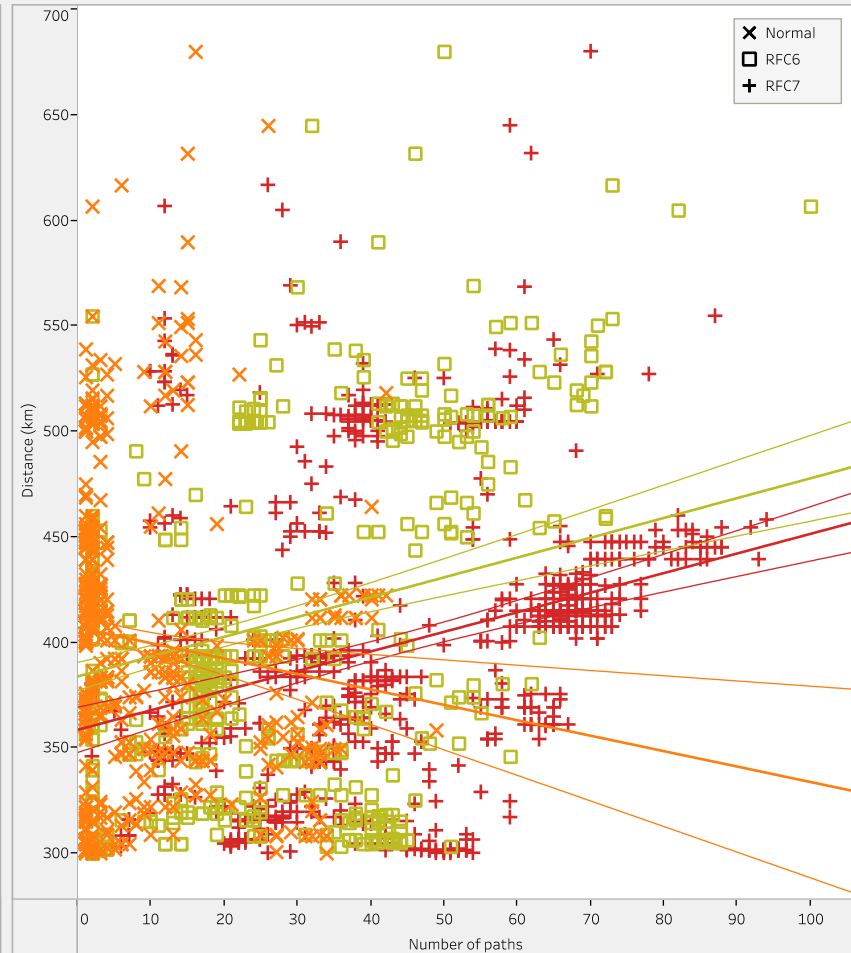


Corridor train - delays, distances

Relation between the order to transport and delay



Distance by corridor line



Date
01/01/15 to 31/05/16

Kilometres
300 km

Corridor train
All

Corridor line
All

Company
All

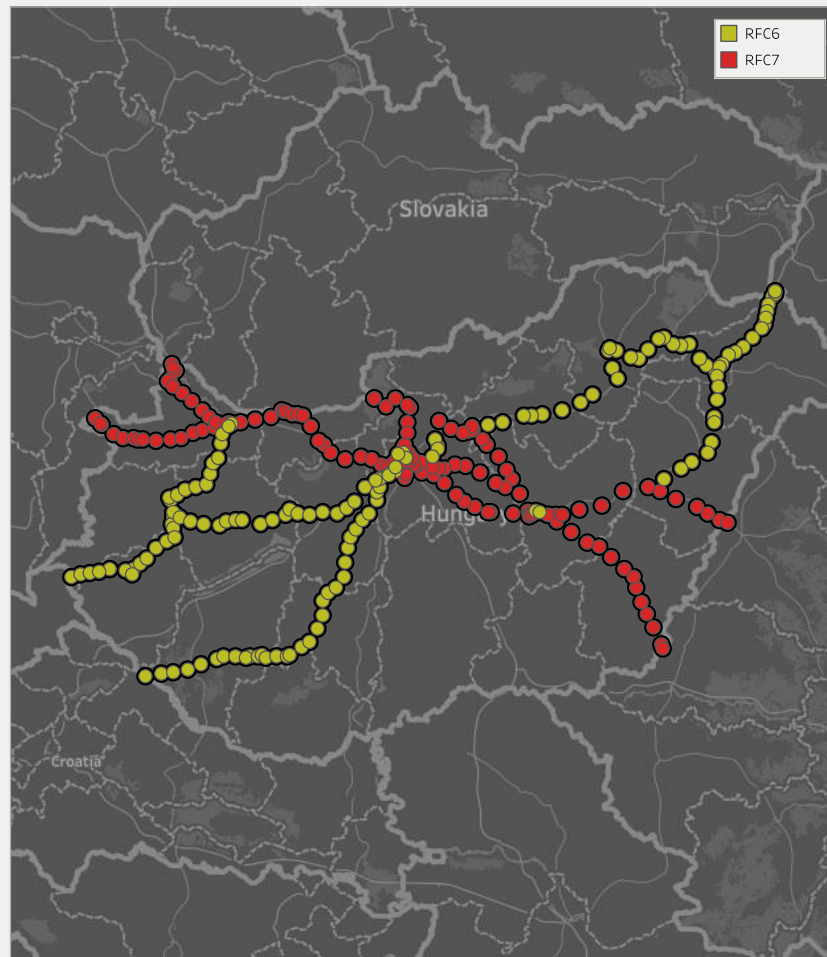
Order
☒ Less then 30 days
☒ More then 30 days

RFCx Lines

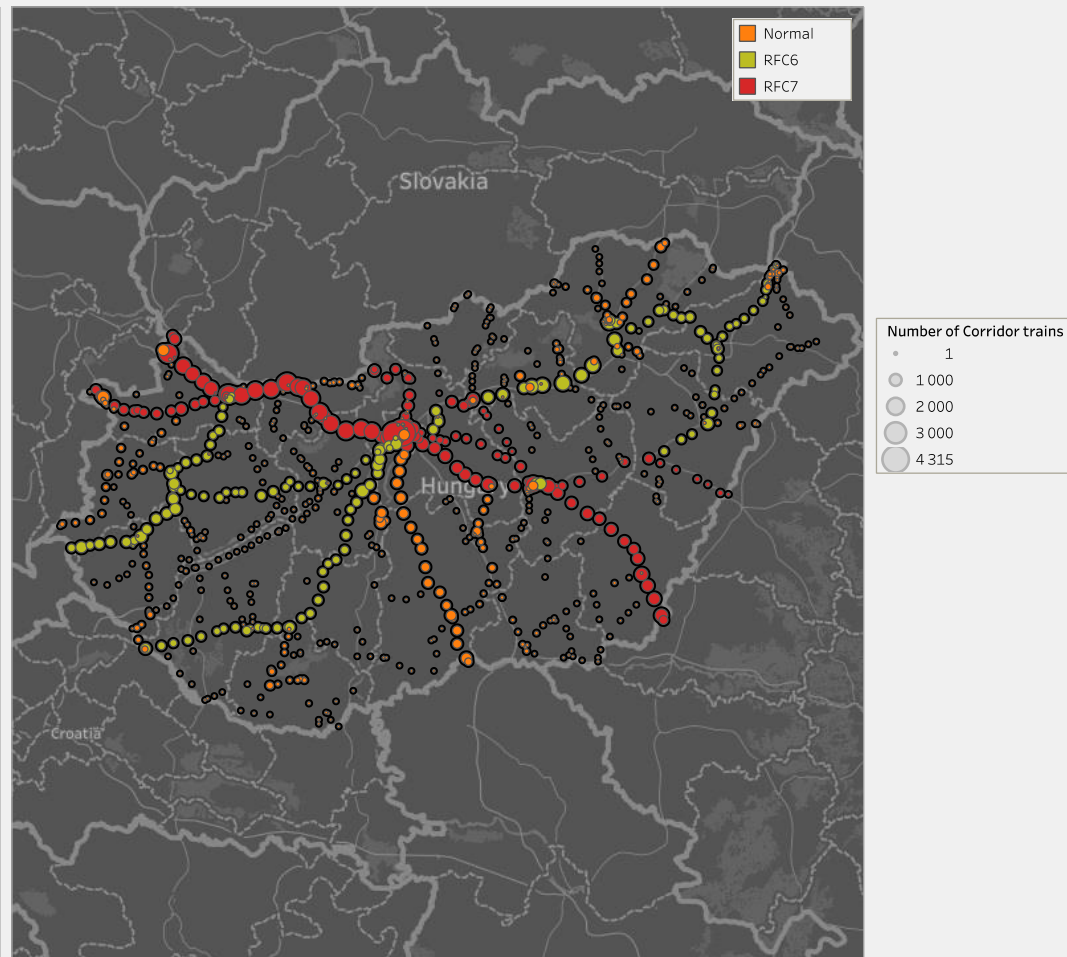
RFCx lines



RFC6 - RFC7 lines



Corridor transport



Thank you for your attention!

