

KAPELLA2 System

new era in capacity allocation

Miklós Szlatényi
IT Manager
VPE



History



Start of KAPELLA System in 2007

- Developed and implemented with time constraints
- Limits in the system due to time constraints



Achievements of KAPELLA System

- Pioneering solutions
- Popularity among users

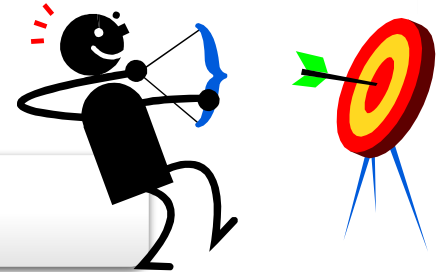


Lifecycle is over

- Resolution of the Master Database
- Regulatory requirements



Main goals



Independent handling of path and service requests

Formalised conceptual design, function for prior bid

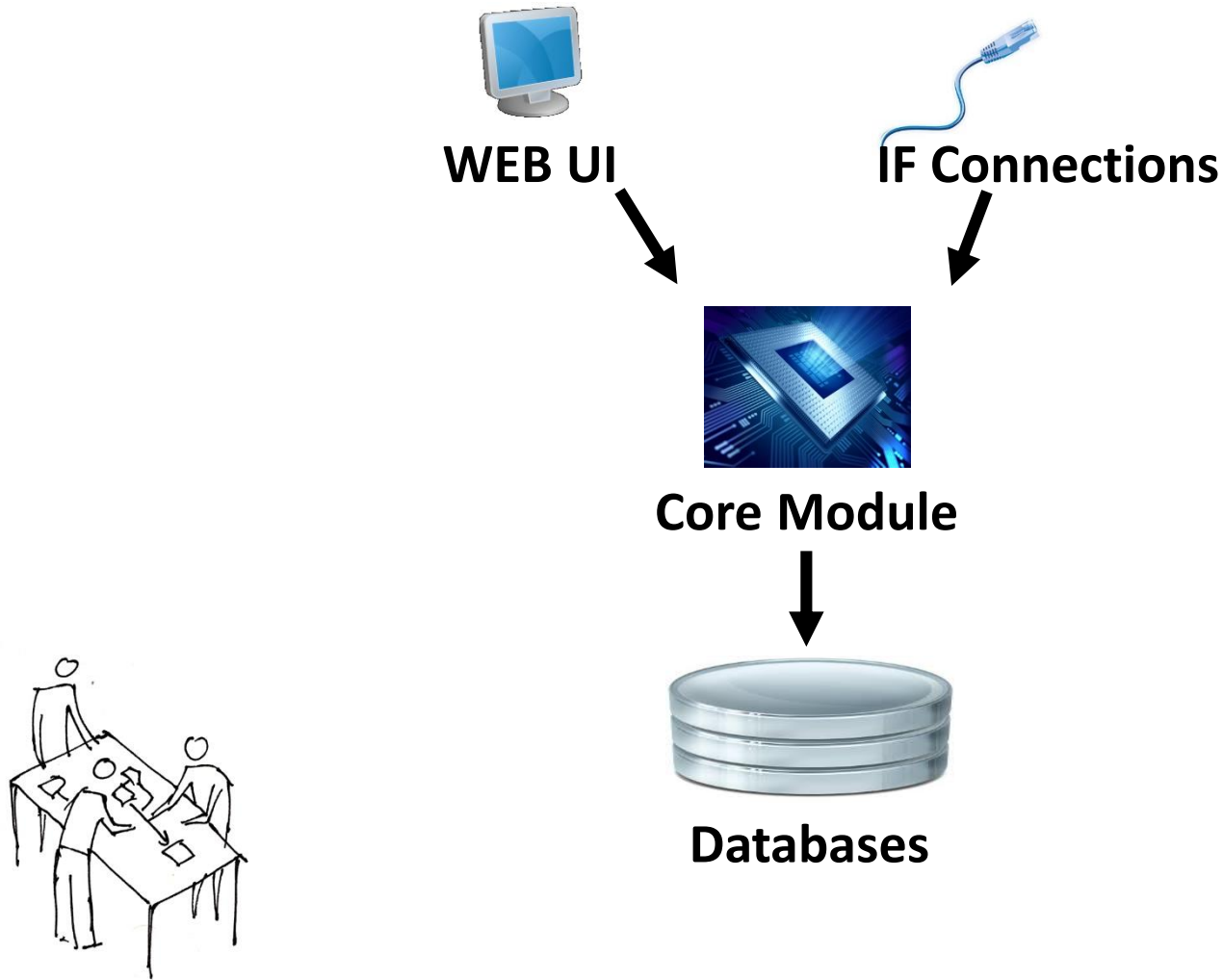
Handling of AA

Automatic request type detection

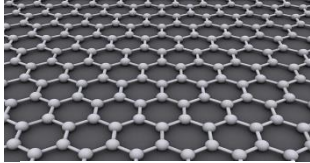
Validity treated master database

User-friendly design

Logical architecture



Master data management



Microscopic level Master data



3 time dimensions for validity treatment



**Auto-sync via
IF connection**



Partner systems



Path & Service ordering

Main functions:

- **Independent handling of path and service requests**
- **Automatic request type detection**
- **Selectable pathfinder algorithm**
- **Different train composition**
- **Selectable electricity provider**
- **Auto-save function**

VPE
KAPELLA

K2 UAT environment

SLÁTERNYI MIKLÓS / FAQ / CONTACT / HU / EN
Sim info

SETTING OF REQUESTS LISTING OF REQUESTS PACKAGES POSSESSION REQUESTS APPENDIX OF NS REPORTS ADMIN DEMO DEV

SUBMISSION OF CAPACITY RESERVATION

CHOOSE TASK TYPE

TASK TYPE

Train paths request *
choose

Train paths request
Order of service

TIME TABLE PERIOD

2015/2016 (2015-12-13 - 2016-12-10) *

CLAIMANT COMPANY

MÁV-START Zrt (MÁV-START)

CLAIMANT PERSON

A2 fejlesztő (start@start.hu)

DAY SET-UP OF RUNNING

ERŐNYESSÉGI INTERVALLUM

POSITIVE DAY SET-UP

NEGATIVE DAY SET-UP

2016-10-24 2016-12-10

naponta

_day_May_Thu_Wed_Thy_Fri_Sat_day_May_Thu_Wed_Thy_Fri_Sat_day_May_Thu_Wed_Thy_Fri_Sat_day_May_Thu_Wed_Thy_Fri_Sat_day_May_Thu_Wed_Thy_Fri_Sat_day_May_Thu_Wed_Thy_Fri_Sat_

2016-10 24 25 26 27 28 29 30 31

TRAIN DATA

PRODUCT TYPE

személyszállítási termékek

TRAIN TYPE

11 - InterCity - IC

TRAIN NAME

REFERENCE DATA AT WITHDRAWAL

RELATED POSSESSION ID

/

/

/

RELATED REQUEST ID

/

/

/

ORIGIN AND DESTINATION DATA

ORIGIN STATION

Budapest-Keleti [5501007]

STARTING TIME

15:05

DESTINATION STATION

Hegyeshalom [5501362]

ARRIVAL TIME

IT IS NOT A STOPPING FOR PASSENGER TRAFFIC.

REVERSE DIRECTION IN FIXED REVERSE UNIT

INTERVAL STATIONS

POSITION

At the beginning

INTERVAL STATION

choose

TYPE OF THE POINT ON THE PATH

choose

ARRIVAL TIME

STARTING TIME

STAY

minute

NOTE

TRAIN COMPOSITION

Clearing train composition

1. változat New version

TARTÓZKODÁSI PONTOK

VONATÖSSZEÁLLÍTÁS SZAKASZOK

1. Budapest-Keleti [5501007] (1)

Budapest-Keleti [5501007] (1) → Hegyeshalom [5501362] (1)

+ Jelenlét hozzáadása

Vonatparaméterek szerkesztése

JÁRMŰTÍPUS:

10 DB

VIRÁG:

100 KM/H

TÖMEG:

1000 T

HOSSZ:

200 M

VONÓ

1047 - Taurus (Milány)

T. VSZÁM:

43210

GY. FÉK:

-

L. FÉK:

-

Á. FÉK:

-

V.KÍSÉRŐ SZEM.SZOLG.: MÁV-START

KOMBINÁLT PROFIL:

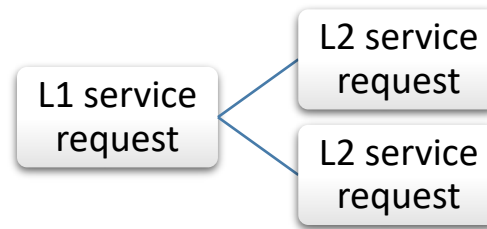
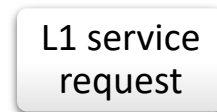
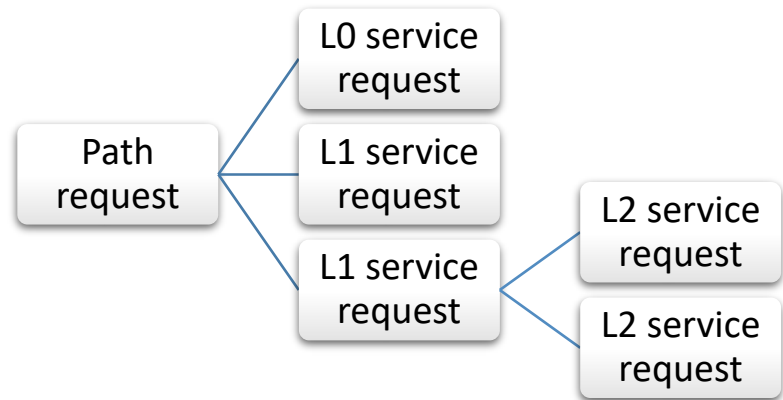
-

2. Hegyeshalom [5501362] (1)



Path & Service ordering

- **Services can be joined to Path requests**
- **Level 1 Category service requests can be ordered independently**
- **Level 2 Category services can be joined to L1 services**
- **Path requests and L(n) service requests' independent identification number:**
 - **Flexible modification & cancellation**
 - **Priority saving of the "package" at elements modification**



Path & Service ordering

Formalised preliminary planning with reduced data request:

- **Timetable study**
- **Price quotation calculation**
- **Timetable study for bad weather conditions**



Benefits:

- **Planning in real environment**
- **Measurable expense**
- **Fast booking**



Possession requests

- Renewed UI
- User-friendly fields (autocomplete, masked, drop-down, etc.)
- Option for „repeating” possessions

ENTERING POSSESSION REQUEST

GENERAL DATA

• **TIMETABLE PERIOD**: 2015/2016 (2015-12-13 - 2016-12-10)

• **CLAIMANT COMPANY**: Magyar Államvasutak Zrt. (MÁV Zrt.)

• **CLAIMANT PERSON**: MÁV - Vágányzár Igénylő (MÁV) (uat_tesztelo@vpe.hu)

BASIC DATA

• **TYPE OF POSSESSION**: Műfaj: ártól ok

• **REASON OF POSSESSION**: 1 - szelődéses időjárás

• **STARTING DATE AND TIME**: 2016-10-24

• **END DATE AND TIME**:

SECTION TO BE CLOSED

• **LINE**: 1 (Budapest-Keleti - Rusovce)

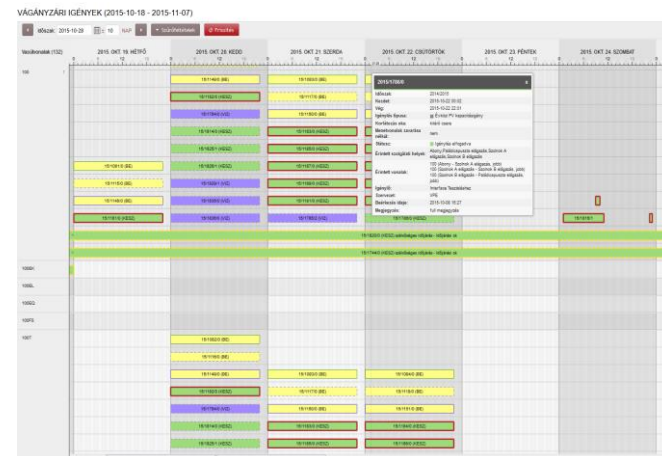
• **ORIGIN STATION**: Budapest-Keleti [5510017]

• **DESTINATION STATION**: Rajka [5501974]

CONTRACTORS

CONTRACTOR: MÁV Zrt. Pályafenntartási Állomány

Possessions
graphical display
of selected lines



Listing and management

- Detailed view
- Complex filtration
- Save/Load filter settings
- Dynamic column arrangement
- Multiple selection & group operation

LIST OF REQUESTS Részletes excel export Excel export

FILTERING CONDITIONS

☐ Deleting of selected filters

☒ AZONOSÍTÓ SZÁM Egyenlő / /

☒ BEÉRKEZÉS DÁTUM Egyenlő /

Filter

GROUP OPERATION

NEW STATUS OF ASSIGNED ITEMS Save change

LIST Találatok: 296 db: 25 / oldal First page Previous page

#	REGISTRY NUMBER MAIN REQUEST IN THE PACKAGE	STATE	CLAIMANT COMPANY CLAIMANT PERSON PHONE NUMBER OF CLAIMANT	DIRECTION SERVICE LOCATION	TRAIN NUMBER TYPE OF SERVICE	TYPE OF REQUEST TASK TYPE TRAIN TYPE	NUMBER OF ASSIGNED PAGE	FIRST
1	M/2016/49/0 M/2016/49/0 87	Elfogadásra vár	BOBO Kft. Bobo menetvonal (+3680806363886625, +	Abony (12:00) Debrecen (14:04)		azonnali Menetvonal Gt	1	2016
2	SZ/2016/50/1	Igénylés elfogadva	BOBO Kft. Bobo menetvonal (+3680806363886625, +	Abony [5513730]	[SZO] Vonatfelvétel (9)	egyedi Szolgáltatás	4	2016
3	M/2016/51/3	Igénylés elfogadva	AWT Rail HU Zrt. AWT Budapest	Győr (15:00) Szombathely (16:47)	21	egyedi	13	2016-10-24

Erkezesi allomas
Ervenyessag
Ervenytelenek is
Feladat típus
Hivatkozott vágányzár azonosító
HU kijelölés elutasította
Hópihe jel



Reports

Wide range reporting opportunities:

- **Monitoring reports**
- **Statistics of the capacity allocation unit**
- **Reports for administrators**
- **Cumulative Price quotation**
- **Statistics of Loading siding**
- **Collision of services**
- **Custom queries**

QUERY MONITOR

FILTERS

LEADING PERSON: NAME: PROCESSING PARAMETER: ☒ TIME OF SUBMISSION: ☐ TIME OF CLOSING: 2016-10-24 16:43:29

☐ ONLY OWN QUERIES TO BE SHOWN. ☐ SHOW PRIOR QUERIES. ☐ SHOW DELETED QUERIES ☐ AUTOMATIC UPDATING.

REPORTS

QUERIES UNDER PROCESSING

FINISHED QUERIES (11)

	OPERATIONS	ID	NAME PROCESSING PARAMETER PROCESSOR'S NOTE	LOADING	STATUS TIME OF MODIFICATION MODIFIER	SQL START TIME SQL END TIME	EXPORT START TIME EXPORT END TIME	EXPORT IDENTIFIER
<input type="checkbox"/>		12	Vonatcím adás események 2016-10-20 - 2016-10-23	Szabó Ágnes	kész 2016-10-24 11:31:56 system	2016-10-24 11:31:55 2016-10-24 11:31:56	2016-10-24 11:31:56 2016-10-24 11:31:56	Vonatcím_adas_esemenyek_20161
<input type="checkbox"/>		11	Lemondott menetvonalak vizsgálata 2016-10-24 - 2016-10-31	Linczmayer György	kész 2016-10-19 14:16:09 system	2016-10-19 14:16:09 2016-10-19 14:16:09	2016-10-19 14:16:09 2016-10-19 14:16:09	Lemondott_menetvonalak_vizsgalat
<input type="checkbox"/>		10	Vonatcím adás események 2016-10-17 - 2016-10-19	Szabó László	kész 2016-10-18 15:07:48 system	2016-10-18 15:07:47 2016-10-18 15:07:47	2016-10-18 15:07:48 2016-10-18 15:07:48	Vonatcím_adas_esemenyek_20161
<input type="checkbox"/>		9	Vonatcím adás események 2016-10-18 - 2016-10-18	Szabó László	nincs adat 2016-10-18 15:05:47 system	2016-10-18 15:05:47 2016-10-18 15:05:47		

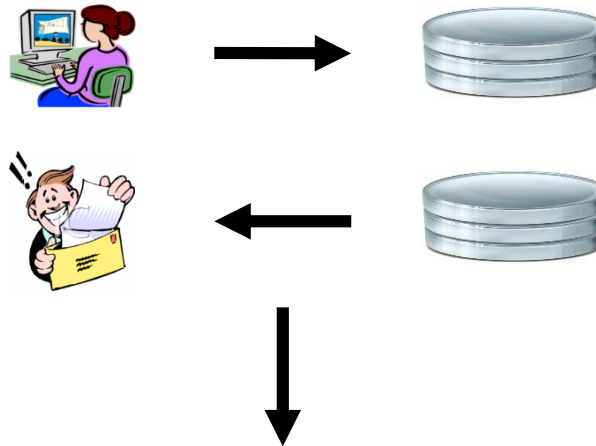
Results into query monitor:

- **Download**
- **Manage**
- **Share**



Network Statement Management

- NS version management
- NS Master Data stored in DB
- Query for the Appendices of NS version



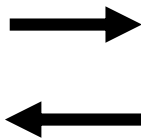
**No difference
between IT systems
and published NS**

IF connections

- HTTPS protocol
- Pull type method
- RailML based



IM/RU Systems



- Path request ordering
- Service request ordering
- Allocation
- Master Data sync
- Price quotation
- Possessions
- PDF timetables

Thank you for your attention!

Miklós Szlatényi
IT Manager
VPE

