

Digitalisation Conference and Fair
Budapest, 24th October 2016

What is PCS?

- Introduction to the system -

What is PCS?

The Path Coordination System (PCS) is an international path request and coordination system for path applicants:

- Railway Undertakings (RUs)
- Infrastructure Managers (IMs)
- Allocation Bodies (ABs)
- Rail Freight Corridors (RFCs)

PCS optimizes international path coordination by ensuring that path requests and offers are harmonized by all involved parties.

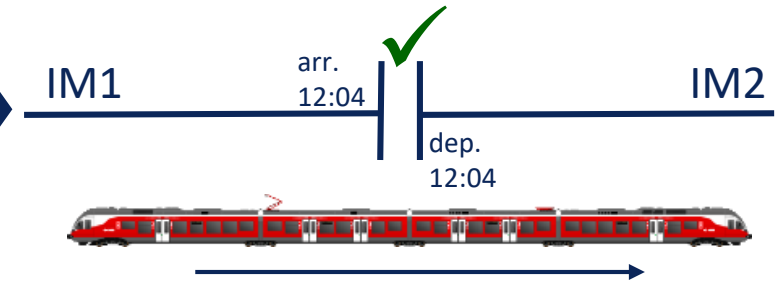
What is PCS?

Input for international path requests needs to be placed only once into one system either into domestic application or directly into PCS.

The tool is also applicable for several other functions:

Path Allocation Pre-Arranged Path Process

Timetable & border point harmonisation



Planned Train composition



Who is in PCS?

Who is in PCS?



1500

Users

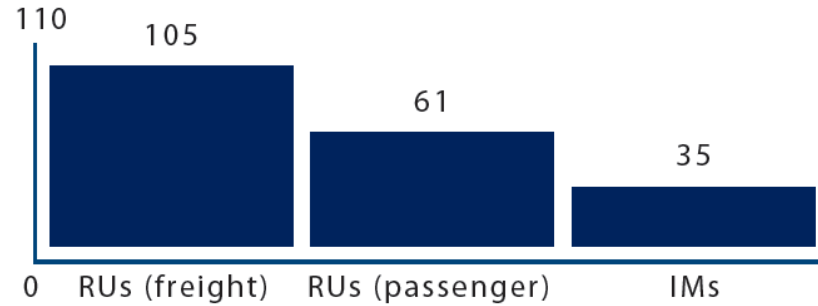
There are approximately 1500 active PCS users



30

Countries

30 countries throughout Europe use PCS on a daily basis



105

**RUs
(freight)**

105 RUs require PCS to coordinate their desired timetables for their international freight lines

61

**RUs
(passenger)**

61 passenger RUs use PCS to coordinate their timetables for international trains across Europe

35

IMs

35 IMs in Europe use PCS to harmonise their paths for cross-border traffic

Who is in PCS?

Rail Freight Corridors (RFCs) map 2016

Including extensions expected in 2017 as indicated by the RFCs*

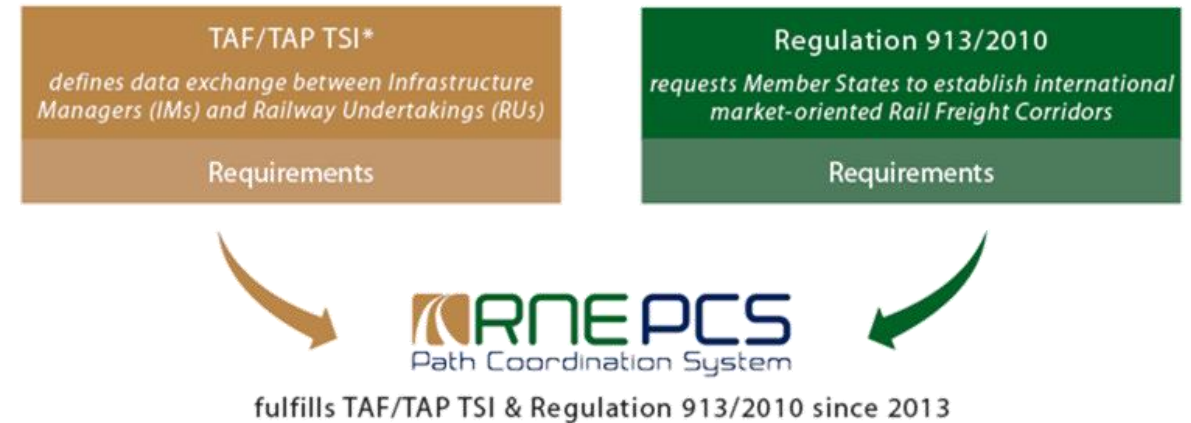


What is in PCS?

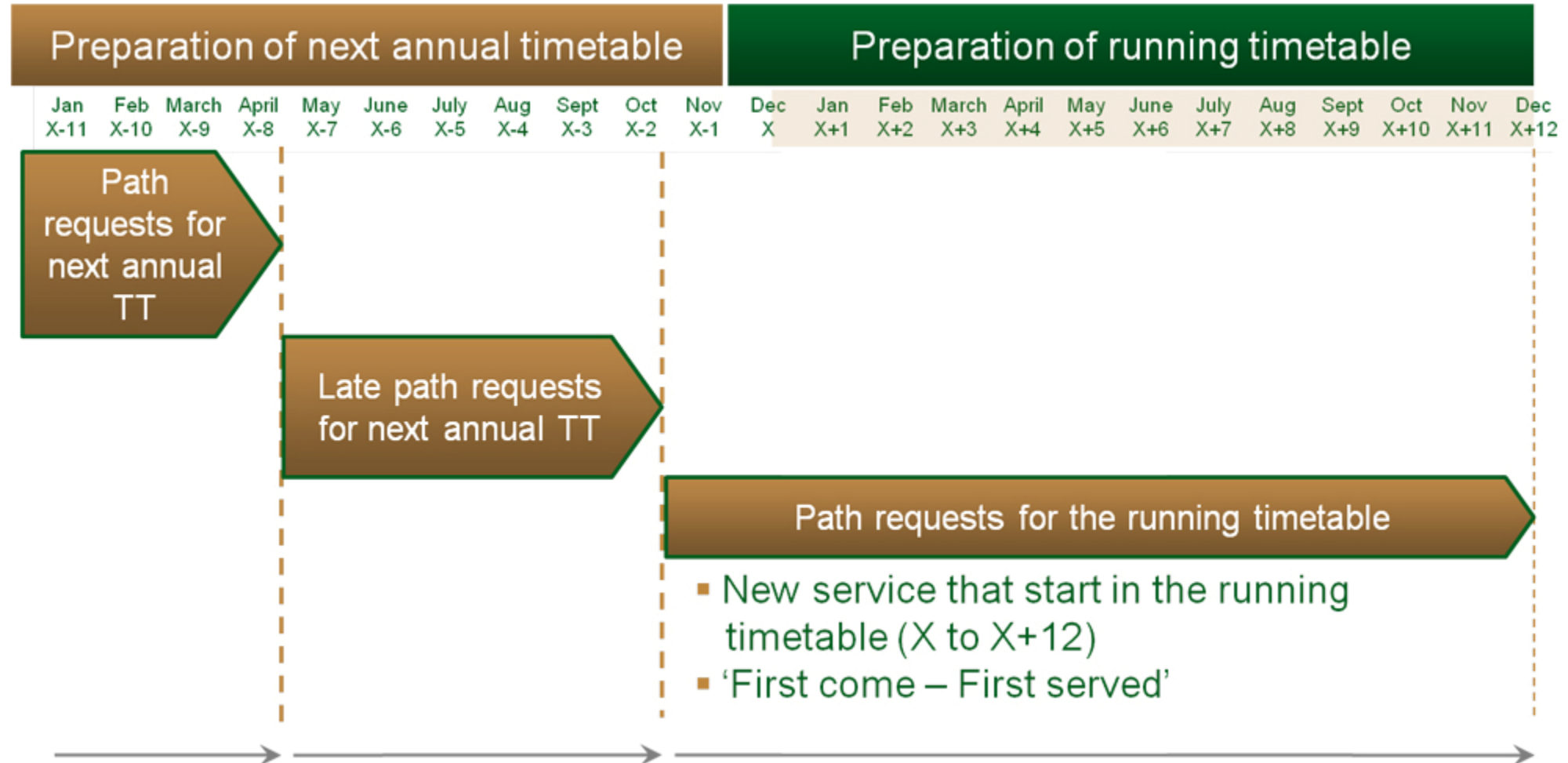
What is in PCS?

PCS is built up from several elements that are co-operating and complementing each other:

- Dossier (= train) as the core element of the system
- Timetable process (2012/34/EU, 913/2010)
- TAF/TAP TSI standards and processes (2006/62/EC)
- Available and reserved capacity Pre-arranged Path
- National IM parameters (Network specific parameters)

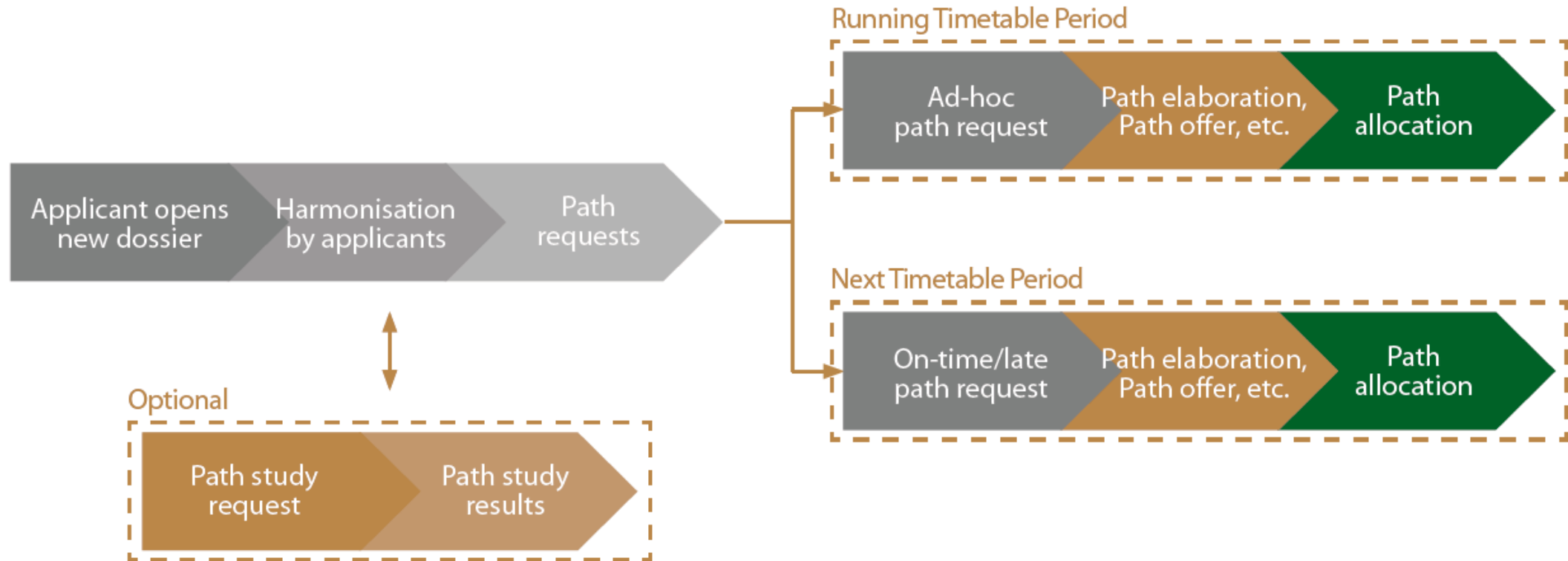


Timetabling phases



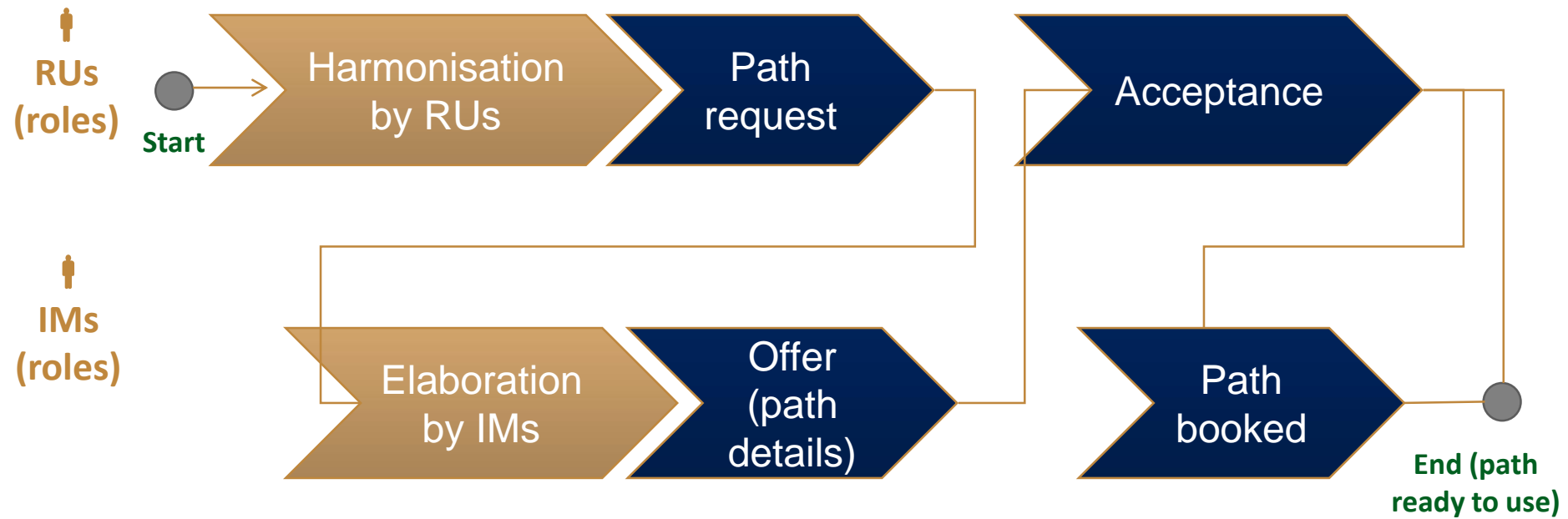
Timetabling process and PCS workflow

Path Coordination System (PCS) and Timetabling Process



→ *Automatic recognition of process type according to the time of the year*

PCS simplified workflow



Overview of PCS functional architecture

Overview of functional architecture



PCS Core System – Web Application

- No installation needed, only a standard web browser
- Users work with web browser and place requests directly into PCS
- Several Excel import/export possibilities are supported

PCS Interface (Integration Platform – PCS IP)

- No double data input – you type it once into your system, the data is forwarded to PCS and vice versa
- Any change in a dossier data or status that is relevant for your company is transmitted to your system



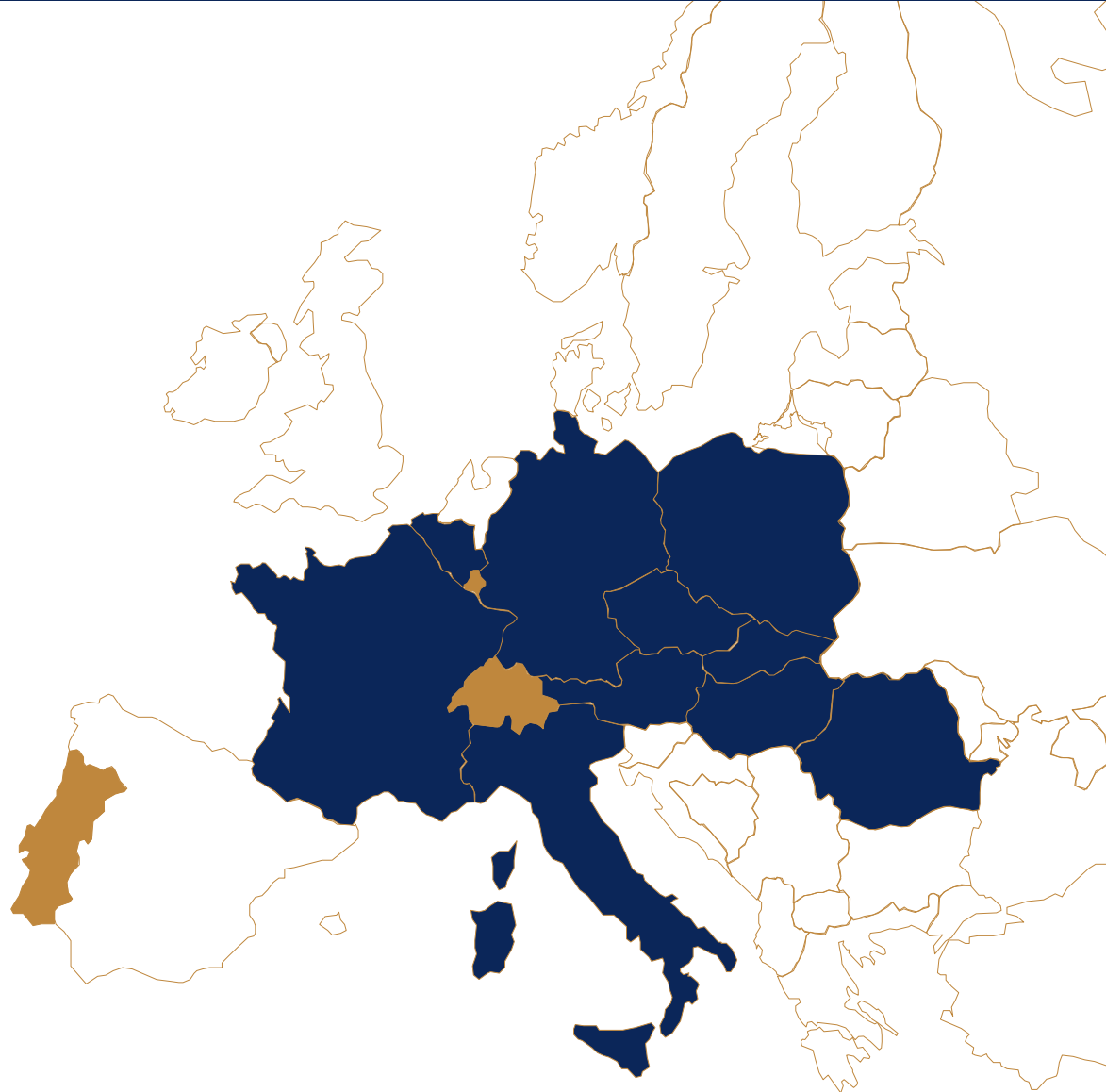
PCS interface map

Current interface partners

CFR, CD, DB Netz, Infrabel, PKP
PLK ÖBB, RFI, SBB, SNCF Réseau,
SZDC, ZSR, VPE

Future interface partners

DB Cargo, IP, RCA, SBB, B
Logistics, SNCF Fret



PCS environments

- Production system
<https://pcs-online.rne.eu>



- School system
<https://pcsschool.rne.eu>

The system is kept for training sessions
It's always in the same state as PCS Production



- Test system
<https://pcstest1.rne.eu>

Then company abbreviations (e.g. db-nz, password always 09)
It always comes with the most recent developments



Who works behind PCS?

PCS team

Joint Office Team



Philipp Koiser
Sales & TT Manager RNE



Jorge Campo
PCS Functional Manager

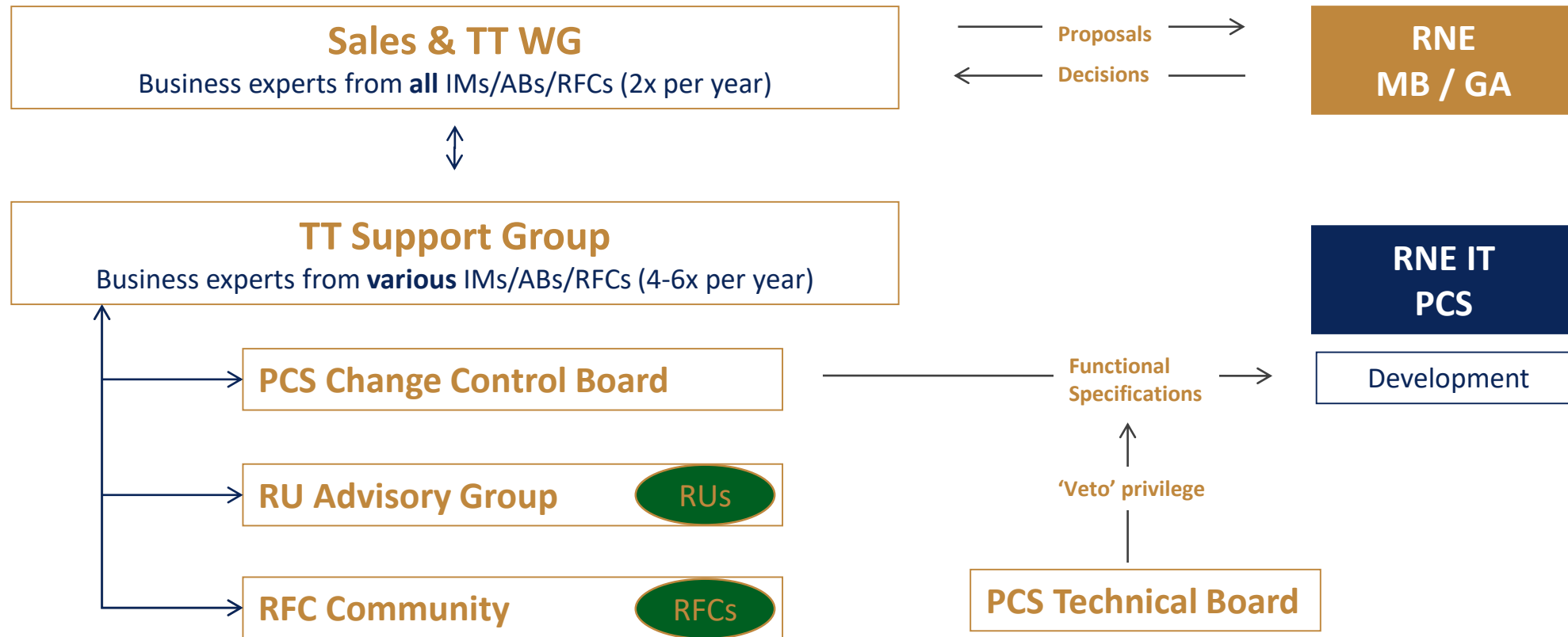


Máté Bak
PCS Technical Manager

Netcetera



Decision making and advisory boards



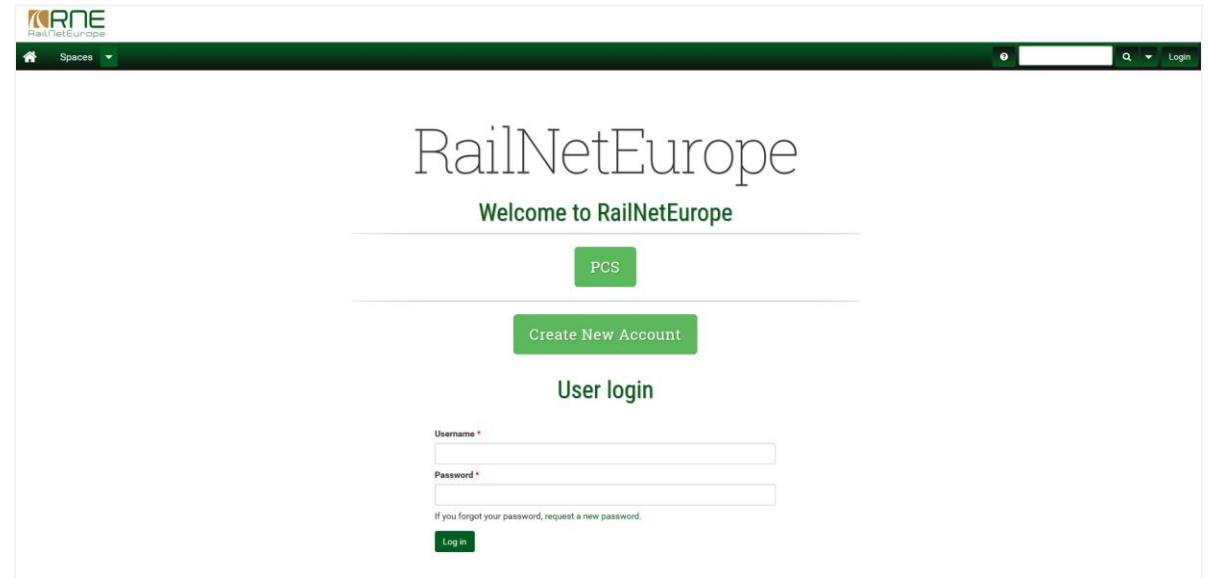
Where can you read about PCS?

Where can you read about PCS?

RNE Content Management System

<http://cms.rne.eu/>

- Public content
- What will you find there?
 - Change Requests
 - Patch Management (fresh bug fixing summary)
 - Documentation:
 - References (e.g. release summary, process description, basic information, general functions)
 - Training materials (e.g. special 'how to do' documents, videos)
 - Technical documentation (e.g. PCS Integration Platform Handbook, Migration Guide)



How can you become a PCS user?

1. Contact PCS Support (support.pcs@rne.eu)
2. Sign PCS User Agreement (if you haven't done so yet)
 - PCS User Agreement
 - PCS Interface Agreement for Users
 - PCS User Agreement with charges
3. Ask for new user account
 - Account with read-only rights
 - Account with editing rights
4. Start working with PCS



Price Model

Price Model from 1st January 2016

- PCS is completely financed by the RNE (Infrastructure Manager's)
 - IMs are financing the System as RNE Members
 - Non RNE Members have a special contract and have to cover their maintenance
- PCS usage for RUs is free of Charge
- PCS usage of the interface is free of Charge



Additional services like own test system, special maintenance is charged on time and material

Thank you!

