



Foto: Volker Emersleben

# **Towards a digital European railway**

## VPE Railway Digitalisation Conference and Fair

DB Netz AG | Konstantin Meermann | I.NMC | Budapest | 2017-10-18

# Agenda

- 1. DB Netz: Modernisation and improvement of IT-landscape**
- 2. Einfachbahn: Customer oriented quick wins**
- 3. The way forward**



# Agenda

- 1. DB Netz: Modernisation and improvement of IT-landscape**
- 2. Einfachbahn: Customer oriented quick wins**
- 3. The way forward**



# DB Netz uses a two step approach towards becoming fully digital

A large, dark grey arrow pointing to the right, containing the text for Step 1.

**Step 1:**  
Replacement and/or upgrade of existing IT-systems to fulfill current IT-standards

A large, dark grey arrow pointing to the right, containing the text for Step 2.

**Step 2:**  
Introduction of new functionalities to improve all aspects of DB Netz' business

# Customer oriented timetabling processes and improved capacity management at DB Netz

**Introduction of pre-constructed path  
with subsequent allocation**

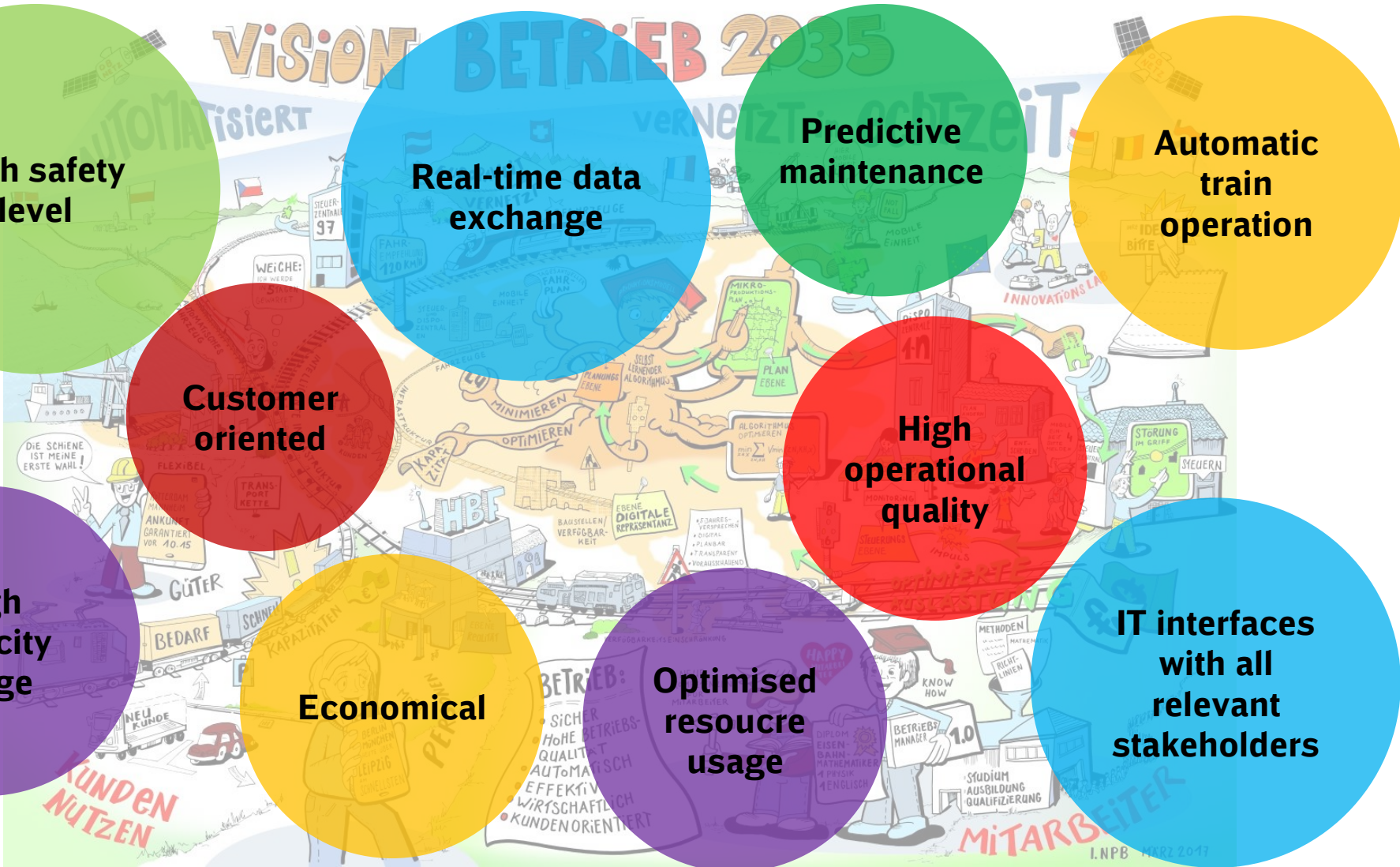


**Faster allocation after path request**



**Optimised capacity usage for a better**

DB Netz Operations aims at full interconnectedness to allow safe, optimal and economical train operations

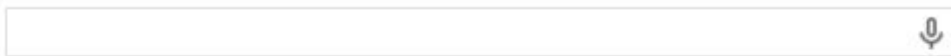


# Agenda

1. **DB Netz: Modernisation and improvement of IT-landscape**
2. **Einfachbahn: Customer oriented quick wins**
3. **The way forward**



The world has always been very complex... successful products for the customers are simple, because they make life itself easier.



Google-Suche

Auf gut Glück!



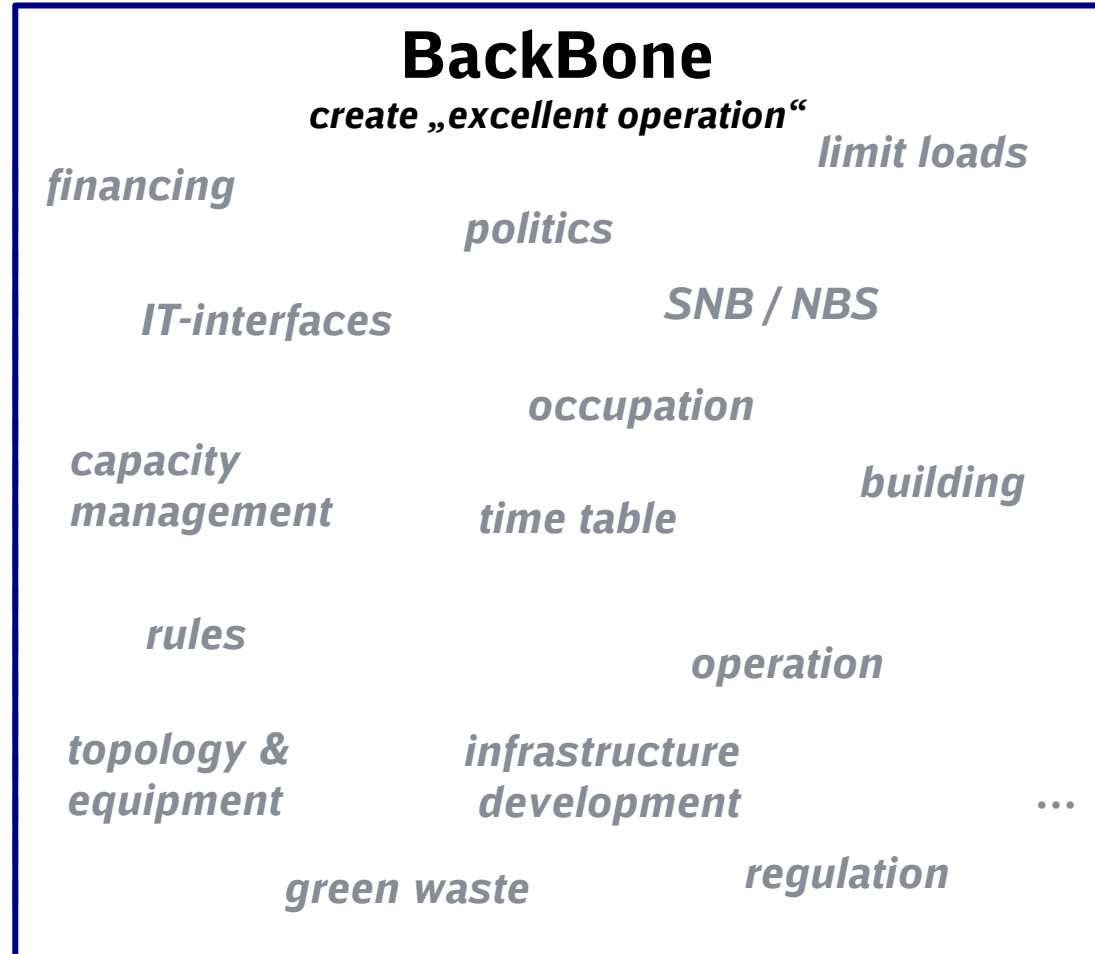
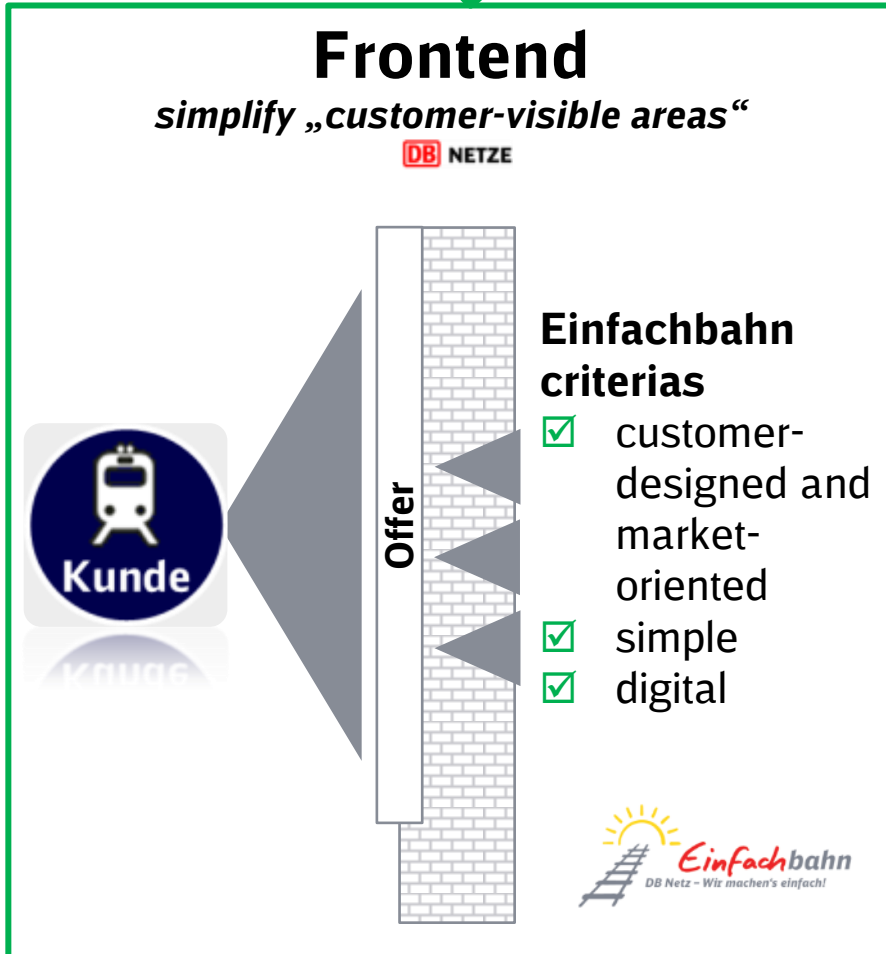


**Einfachbahn** reduces complexity clearly – customer-visible areas are simple, customer-designed and digital!



**complexity low**

**complexity high**



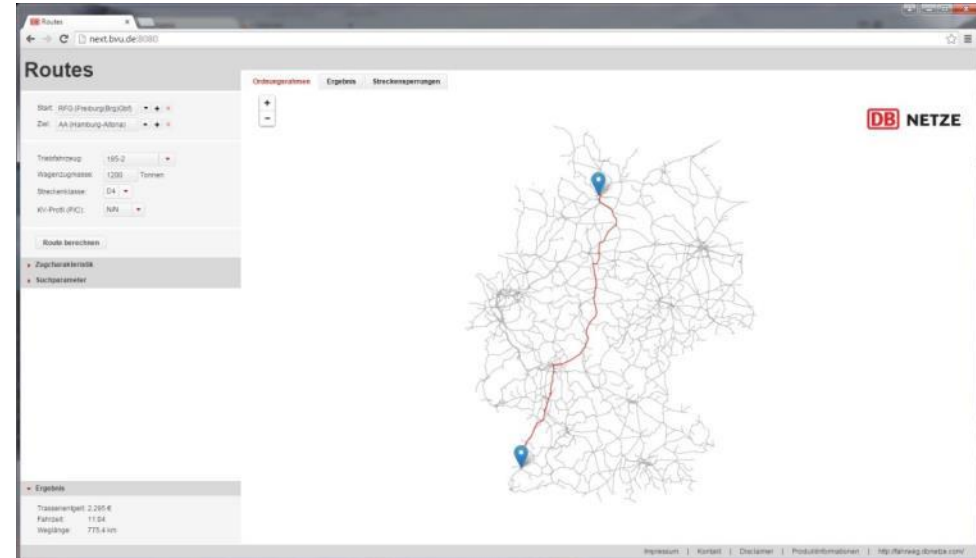
# Webtool **Trassen**finder – Matching of technical parameters and possible paths

## Railway



- Possible paths cannot be easily identified by customers alone
- Information from timetabling department needed or exhausting analysis of older systems and documents

## Einfachbahn

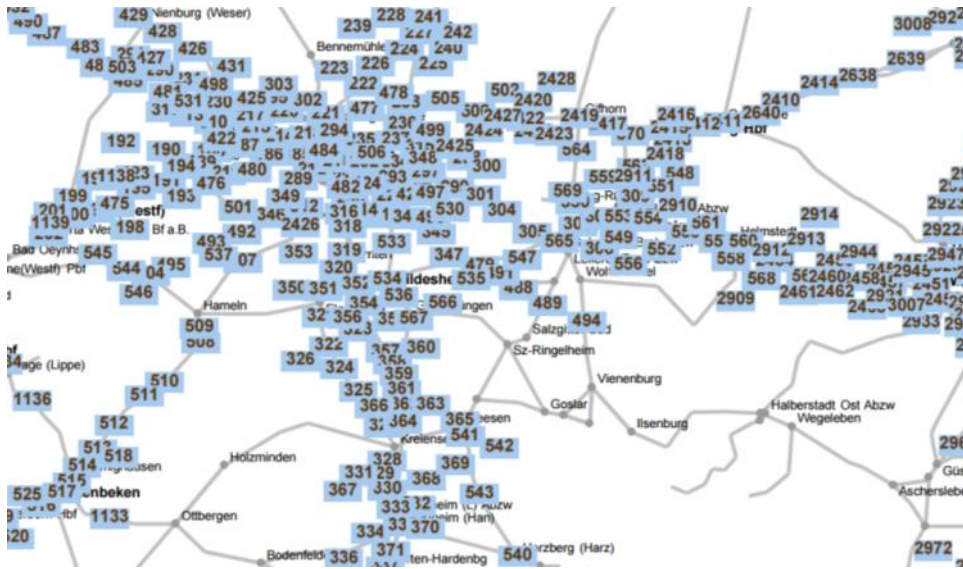


- Paths with matching technical parameters can be easily found online
- The application uses the same database and algorithms as the new timetabling system

# Strecken.info – Map based online platform for information about TCR and incidents

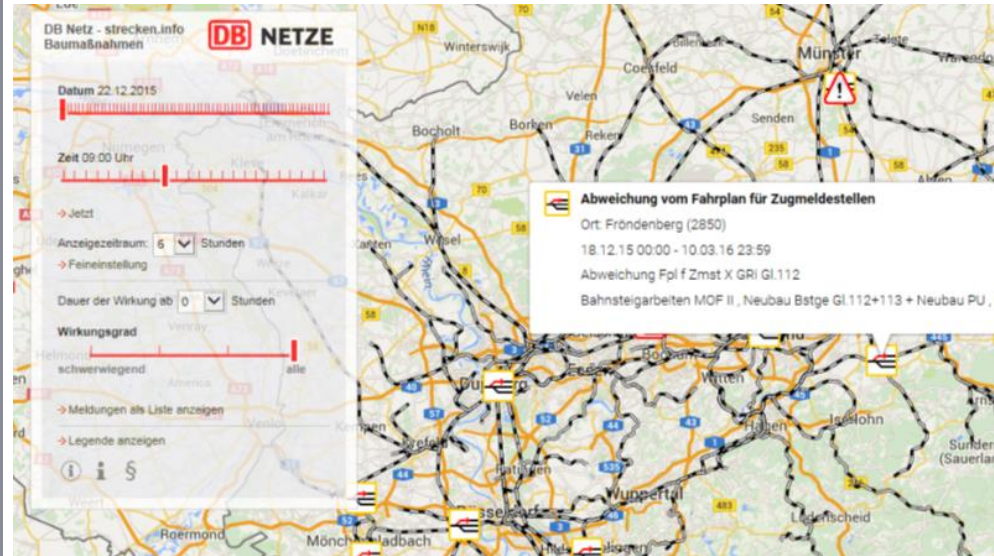


## Railway



- 12-week advance notice of TCR
- About 800 pages and difficult to read maps
- Limited possibilities to analyse impact on own traffic

## Einfachbahn



- Online application gives overview about coming TCR (next 12 weeks)
- Relevant information can be easily found due to individual adjustment possibilities
- Interconnected to other IT-Tool with real-time train movement and incident information

# Agenda

1. **DB Netz: Modernisation and improvement of IT-landscape**
2. **Einfachbahn: Customer oriented quick wins**
3. **The way forward**



To achieve complete IT interoperability in Europe  
close cooperation of all stakeholders is necessary

**Full compliance to standards and  
procedures set by ERA and the industry**

**Close cooperation on RNE level**

**Communication of best practice solutions**



**Thank you for your attention**